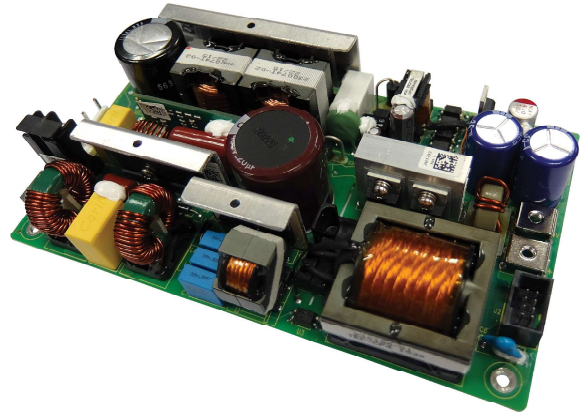


## 500W Configurable AC-DC Power Supplies

### Features

- ◆ ITE & Medical Certifications (2 x MOPP)
- ◆ Class I and Class II operation with Level B EMC
- ◆ Compact 4 x 7.1" Footprint
- ◆ Suitable for B and BF Rated Equipment
- ◆ Five Year Warranty



### Key Market Segments & Applications

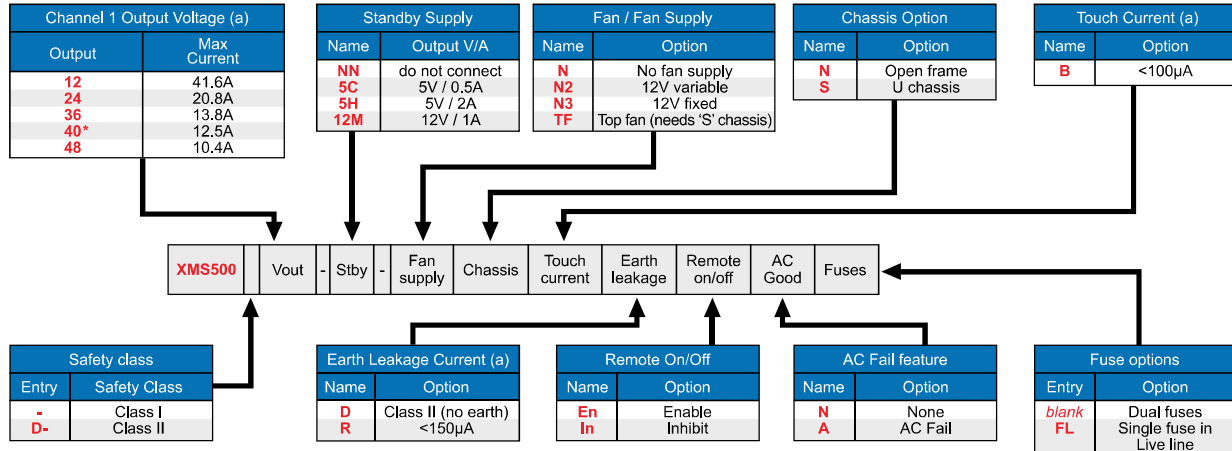


Specifications <sup>(1)</sup>		
Model	XMS500	
Input Voltage range		90 - 264VAC (47 - 63Hz)
Inrush Current (Cold start at 264VAC input)	A	<40A
Hold Up Time (Typ)	ms	≥16ms
Harmonic Compliance	-	EN/IEC61000-3-2 compliant. 0.97 at 110Vac input
Leakage Current	uA	<150uA (Class I construction) - See model selector
Touch Current (enclosure leakage)	uA	<100uA - See model selector
Ripple & Noise	mV (pk-pk)	≤1%
Total Regulation	%	≤2% (Line, load and temperature)
Short Circuit Protection	-	Hiccup mode, automatic recovery
Oversvoltage Protection	V	Latching (unit shutdown), cycle AC input to reset
Efficiency	%	Up to 92% (230VAC input, 100% load)
Operating Temperature	°C	0 to +70°C, derate linearly to 50% load from 50 to 70°C. -20°C start-up
Storage Temperature	°C	-40 to +85°C (+70°C for top fan versions)
Humidity (non condensing)	%RH	5 - 95%RH
Cooling	-	Forced air (500W): 1m/s airflow or top mount fan; Convection (250W minimum) <sup>(2)</sup>
Withstand Voltage	VAC	Input to Ground 1.5kVAC (1xMOPP) Class I only, Input to Output 4kVAC (2xMOPP), Output to Ground 1.5kVAC (1xMOPP) Class I only
Insulation Class	-	Class I or Class II - See model selector
Vibration (non operating)	-	10 to 200Hz at 2G. Conforms to IEC610068-2-6, IEC68-2-6 MIL-STD-810G, Method 514.4, Pro I, Cat 1,9
Shock	-	±3 x 30g shocks in each plane, total 18 shocks, 30g shock = 11ms (±0.5msec), half sine Conforms to EN60068-2-27, EN60068-2-47, IEC68-2-27, IEC68-2-47, JIS C0041-1987. Conforms to MIL-STD-810G, Method 516.6, Pro I, IV, VI
Safety Agency Certifications	-	IEC/EN/UL60950-1 and 60601-1. ANSI/AAMI ES60601-1. Designed to meet IEC61010-1
Altitude	m	-200 to 5000m operational (3000m for 60601-1) (-200 to 5000m storage/transportation)
Conducted & Radiated EMI	-	EN55011 / EN55032 Class B, EN60601-1-2:2015 4th Edition
Immunity	-	EN61000-4-2, -3, -4, -5, -6, -8, -11, -12 and -14, EN60601-1-2:2015 4th Edition
Weight (Typ)	g	See application notes
Size (WxLxH) Open frame version	In (mm)	4 x 7.1 x 1.46" (102 x 180 x 37mm)
Warranty	yrs	Five years
Connectors	-	Molex as standard with separate ground faston See Installation Manual for part numbers

Note: 1. See website for detailed specifications

2. Higher convection rating possible depending on configuration, mounting orientation, and specific application operating conditions. Please contact Tech Support with detailed requirements.

## How to Create a Product Description



(a) - additional variants available, consult sales office

\*Confirm availability of required product with sales office

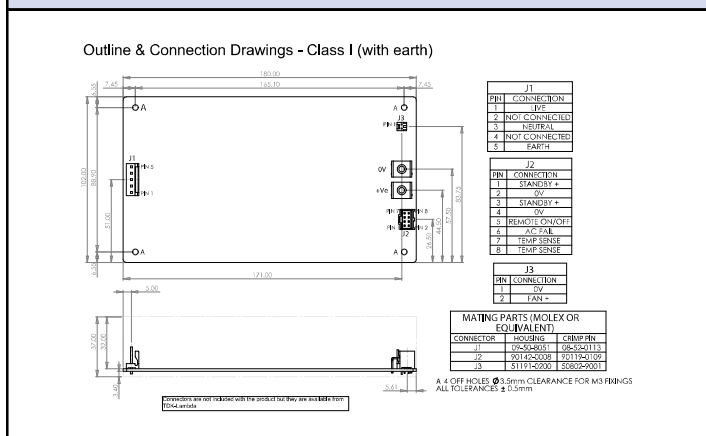
## Quick Selector (Standard models)\*

Output		Cover / Chassis / Fan type	Class I		Class II	
Volts	Current		Product Description	Order Code	Product Description	Order Code
12V	41.6A	Open Frame	MS500-12-5H-N2NBRInA	XMS5001M	XMS500D-12-5H-N2NBDInA	XMS50024
		U chassis	MS500-12-5H-N2SBRInA	XMS5003X	XMS500D-12-5H-N2SBDInA	XMS5004F
		Top fan	MS500-12-5H-TFSBRInA	XMS5005Y	XMS500D-12-5H-TFSBDInA	XMS5006G
24V	20.8A	Open Frame	MS500-24-5H-N2NBRInA	XMS50070	XMS500D-24-5H-N2NBDInA	XMS5008H
		U chassis	MS500-24-5H-N2SBRInA	XMS50091	XMS500D-24-5H-N2SBDInA	XMS500BN
		Top fan	MS500-24-5H-TFSBRInA	XMS500C6	XMS500D-24-5H-TFSBDInA	XMS500DP
36V	13.8A	Open Frame	MS500-36-5H-N2NBRInA	XMS500FR	XMS500D-36-5H-N2NBDInA	XMS500G8
		U chassis	MS500-36-5H-N2SBRInA	XMS500HS	XMS500D-36-5H-N2SBDInA	XMS500JT
		Top fan	MS500-36-5H-TFSBRInA	XMS500KB	XMS500D-36-5H-TFSBDInA	XMS500LV
48V	10.4A	Open Frame	MS500-48-5H-N2NBRInA	XMS500MC	XMS500D-48-5H-N2NBDInA	XMS500NW
		U chassis	MS500-48-5H-N2SBRInA	XMS500PX	XMS500D-48-5H-N2SBDInA	XMS500RY
		Top fan	MS500-48-5H-TFSBRInA	XMS500SG	XMS500D-48-5H-TFSBDInA	XMS500T0

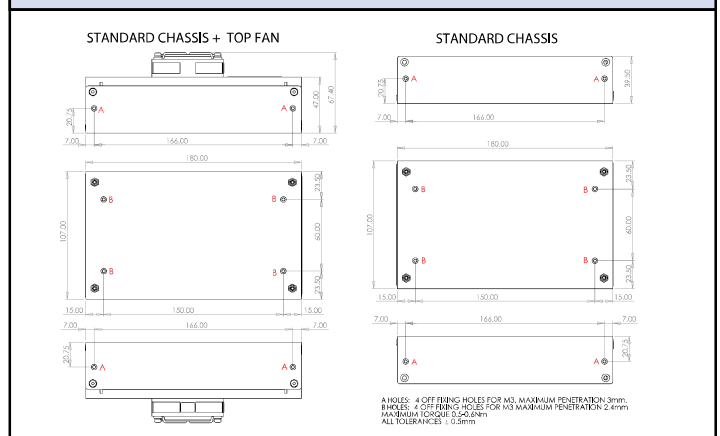
\*Note: Additional variants available - see 'How To Create A Product Description'

Standard models include: '5H' standby (5V / 2A), 'N2' fan supply (12V / 0.3A variable supply voltage) [except on Top fan variants], 'B' touch current (<100µA), 'In' remote on/off (inhibit) and 'A' AC Fail. Class I standard models include 'R' earth leakage (<150µA).

## Outline Drawing



## Outline Drawing



For Additional Information, please visit  
[us.tdk-lambda.com/lp/products/xms-series.htm](http://us.tdk-lambda.com/lp/products/xms-series.htm)

